



Dnyanoday Prashikshan Sevabhavi Sanstha's

ID No. PU/PN/C/371/2009

FORESIGHT



College of Commerce
Affiliated to Savitribai Phule Pune University

382, YMCA Complex, New Rasta Peth, Quarter Gate, Pune-411011 • Mob: 9764445481 • www.fccpune.com

Chairman: Chetan Rathod

Secretary: Shallesh G Mehta

PUNCODE: CAAP014880

AISHE CODE: C-41344


NAAC: B++

CRITERION-IV	
KEY INDICATOR	4.1 Physical Facilities
METRIC NO.	4.1.2

The Institution has adequate facilities for cultural activities, sports, games (indoor, outdoor), gymnasium, yoga center etc.

Academic year
2023-2024




Principal
Foresight College of Commerce
Pune



Dnyanodaya Prashiksha Sevabhavi Sanstha's

UD No. PU/PH/C/371/2009

FORESIGHT

College of Commerce
Affiliated to Savitribai Phule Pune University



382, YMCA Complex, New Rasta Path, Quarter Gate, Pune 411011 • (Mob. 9264445AB1) • www.fc.pune.com

Chairman: Chetan Rathod

Secretary: Shallesh G. Mehta

PUNCODE: CAAP014880

AISHE CODE: C-41344

NAAC: B++

Criterion 4

Key Indicator – 4.1 Physical Facilities

4.1.2 The Institution has adequate facilities for cultural activities, sports, games (indoor, outdoor), gymnasium, yoga centre etc

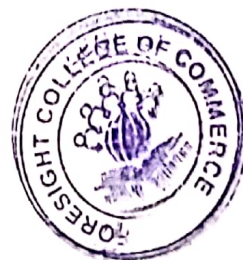
The institution provides adequate facilities for sports, games, and cultural activities, promoting the overall development of students.

Sports and Games Facilities:

The campus features a **multi-purpose sports ground** on rent that is well-maintained and spacious enough to accommodate various outdoor sports such as **cricket, football, volleyball, and athletics**. The ground is regularly used by students for inter-college competitions and practice sessions. Additionally, there are indoor facilities for **badminton, table tennis, and carom**. The sports infrastructure has been in place since the institution's establishment and is frequently updated to meet student demands.

Cultural Activities:

The institution has a dedicated **cultural hall** equipped with a stage, sound system, lighting, and seating arrangements for conducting cultural events, performances, and workshops. This space is used for regular activities such as dance, music, drama, and other artistic expressions. The cultural hall has been operational since 2015 and is widely used for events throughout the academic year.




Principal
Foresight College of Commerce
Pune

User Rate:

Both sports and cultural facilities see high utilization rates, with **regular participation in intra-college and inter-college competitions** and cultural festivals. The institution organizes annual **sports days** and **cultural fests**, engaging a significant portion of the student body.

These facilities provide students with opportunities for physical fitness, teamwork, and creativity, contributing to their holistic development.




Principal
Foresight College of Commerce
Pune



Dnyanoday Prashikshan Sevabhavi Sanstha's

ID No. PU/PN/C/371/2009

FORESIGHT

College of Commerce

Affiliated to Savitribai Phule Pune University



382, YMCA Complex, New Rasta Peth, Quarter Gate, Pune-411011 • Mob: 9764445481 • www.fccpune.com

Chairman: Chetan Rathod

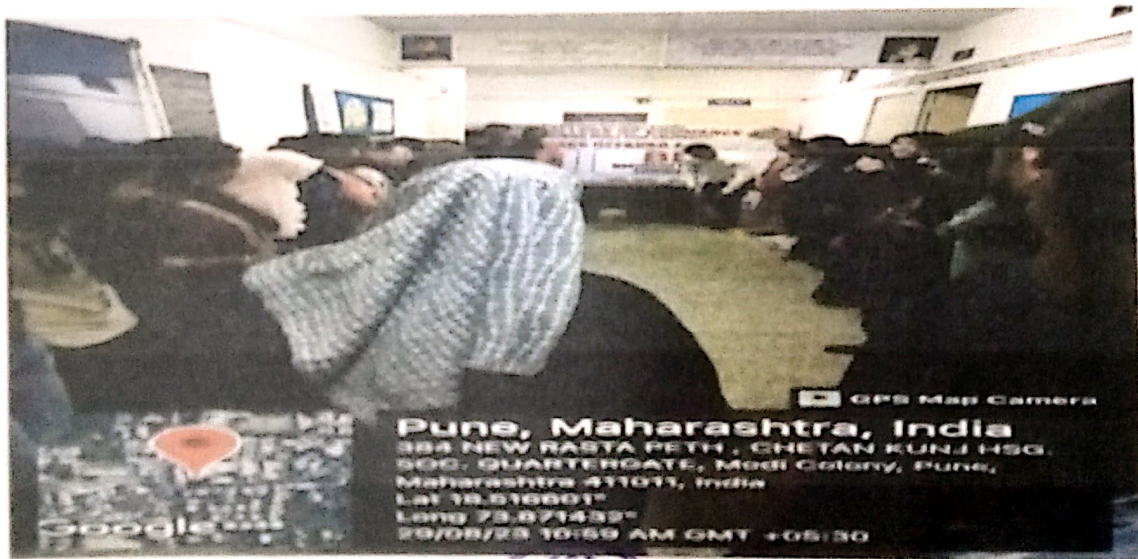
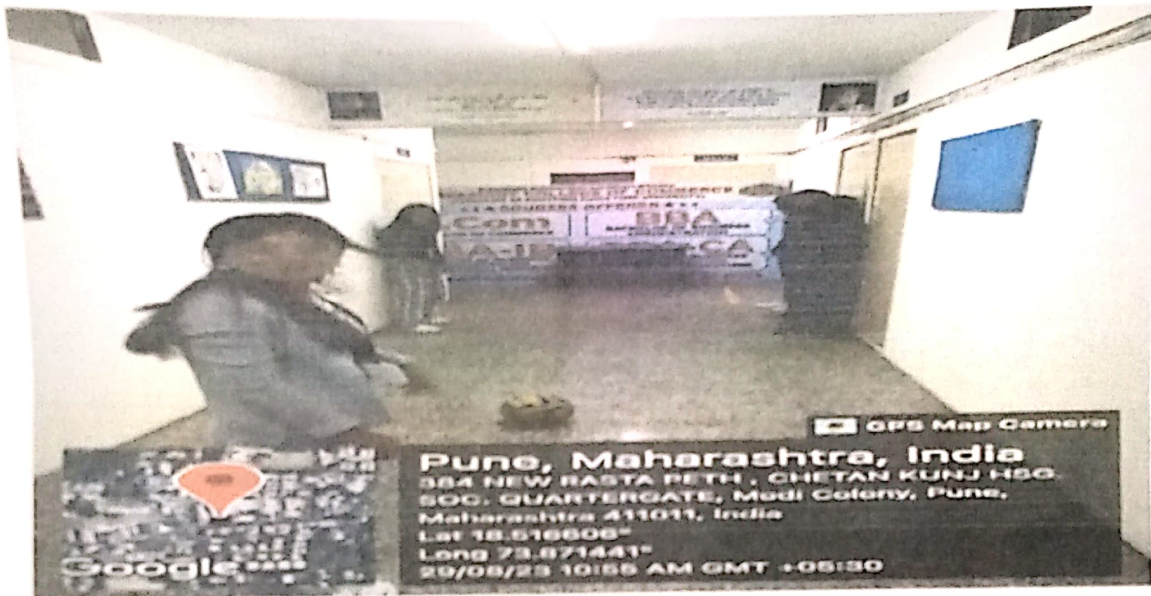
Secretary: Shailesh G Mehta

PUNCODE: CAAP014880

AISHE CODE: C-41344

NAAC: B++

GEOTAGGED SPORTS AND CULTURAL PHOTOS



Principal
Foresight College of Commerce
Pune



Dnyanoday Prashikshan Sevabhavi Sanstha's

ID No PU/PN/C/371/2009

FORESIGHT

College of Commerce

Affiliated to Savitribai Phule Pune University

382, YMCA Complex, New Rasta Peth, Quarter Gate, Pune-411011 • Mob: 9764445481 • www.fccpune.com

Chairman: Chetan Rathod

Secretary: Shailesh G Mehta

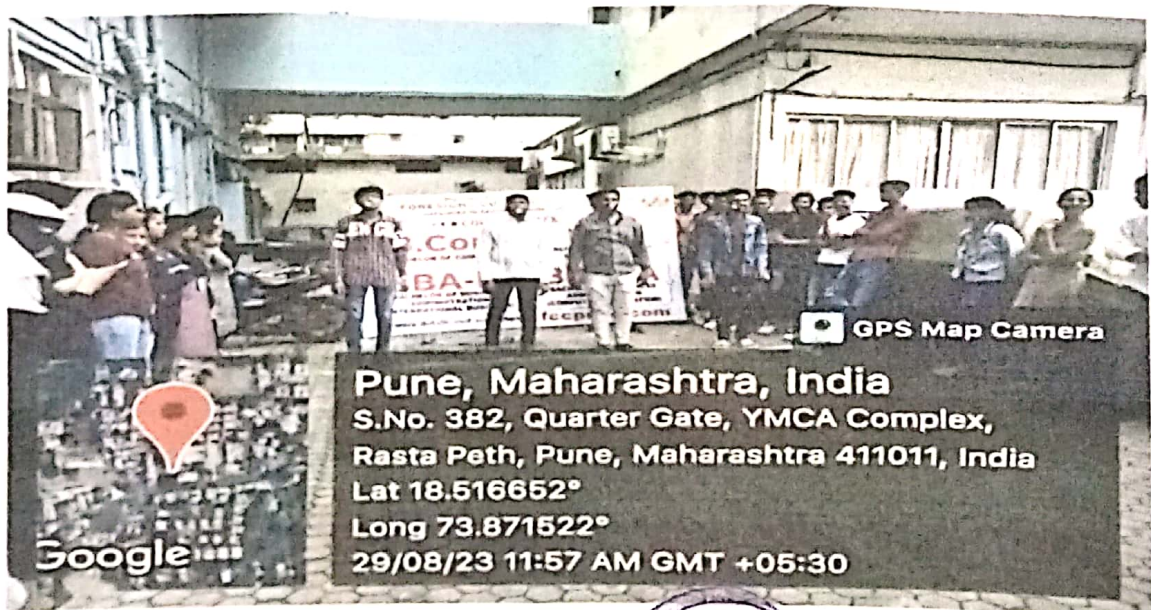
PUNCODE: CAAP014880

AISHE CODE: C-41344

NAAC: B++



GEOTAGGED SPORTS AND CULTURAL PHOTOS



Principal
Foresight College of Commerce
Pune



Dnyanoday Prashikshan Sevabhavi Sanstha's

ID No PU/PN/C/371/2009

FORESIGHT

College of Commerce
Affiliated to Savitribai Phule Pune University



382, YMCA Complex, New Rasta Peth, Quarter Gate, Pune-411011 • Mob: 9764445481 • www.fccpune.com

Chairman: Chetan Rathod

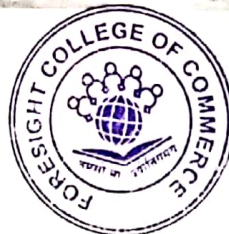
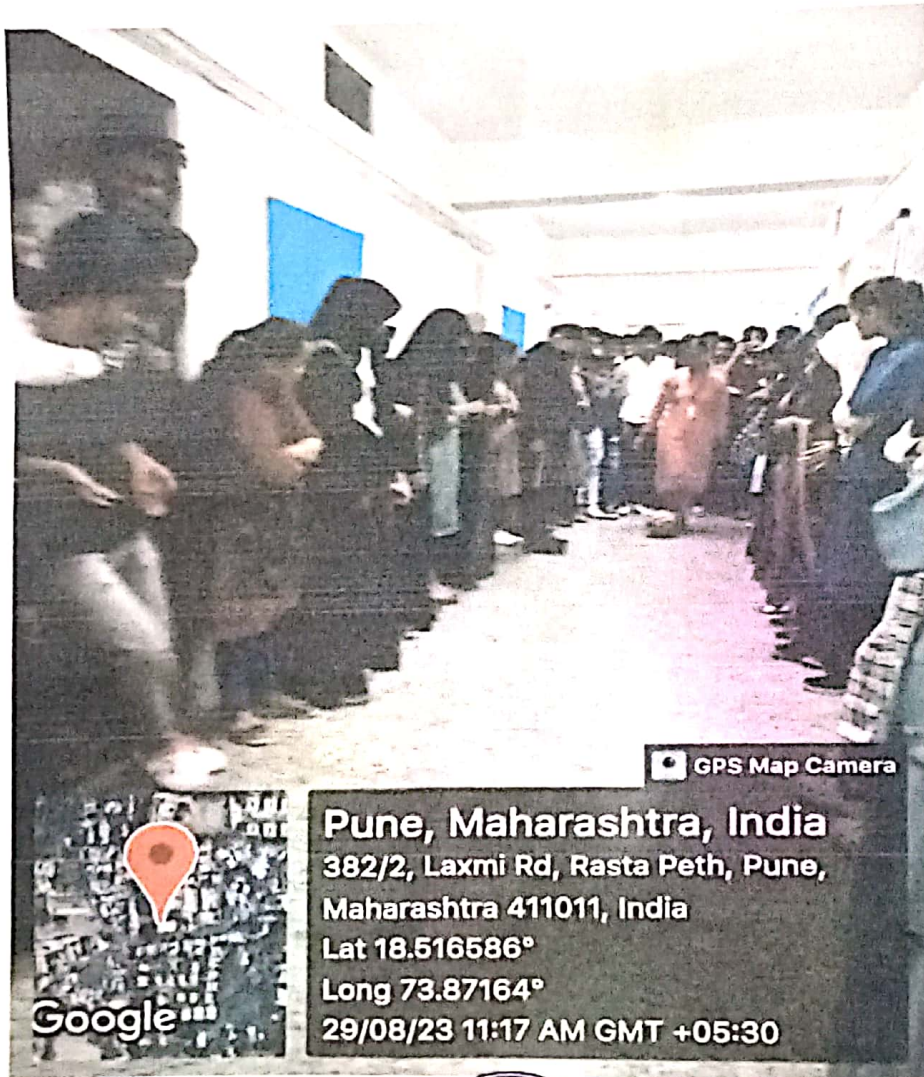
Secretary: Shailesh G Mehta


PUNCODE: CAAP014880

AISHE CODE: C-41344

NAAC: B++

GEOTAGGED SPORTS AND CULTURAL PHOTOS




Principal
Foresight College of Commerce
Pune



Dnyanoday Prashikshan Sevabhavi Sanstha's

ID No PU/PN/C/371/2009

FORESIGHT

College of Commerce
Affiliated to Savitribai Phule Pune University



382, YMCA Complex, New Rasta Peth, Quarter Gate, Pune-411011 • Mob: 9764445481 • www.fccpune.com

Chairman: Chetan Rathod

Secretary: Shallesh G Mehta

PUNCODE: CAAP014880

AISHE CODE: C-41344

NAAC: B+

GEOTAGGED SPORTS AND CULTURAL PHOTOS



Principal
Foresight College of Commerce
Pune